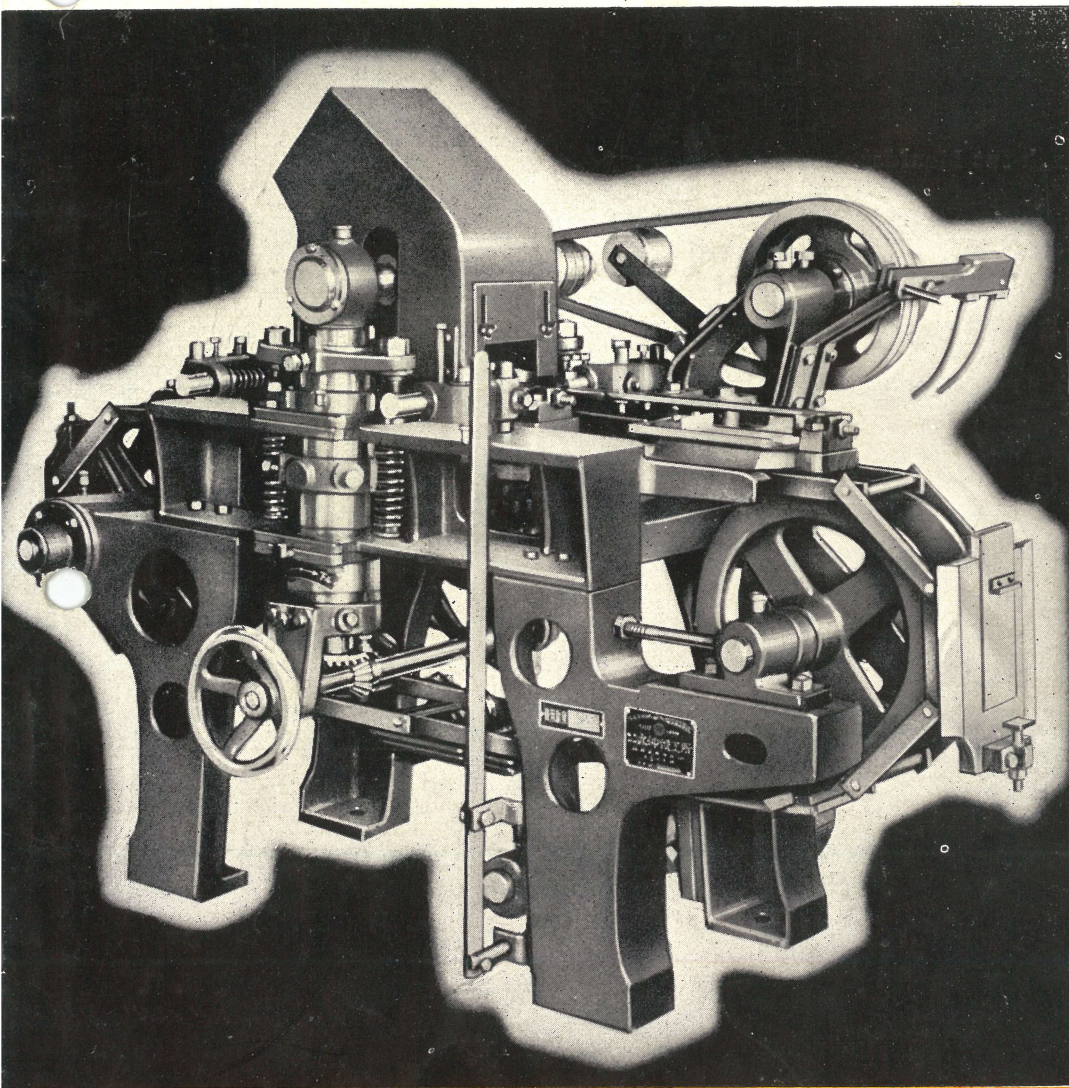


MARU NAKA

Sandal Making Machines



High
Efficiency

High
Production

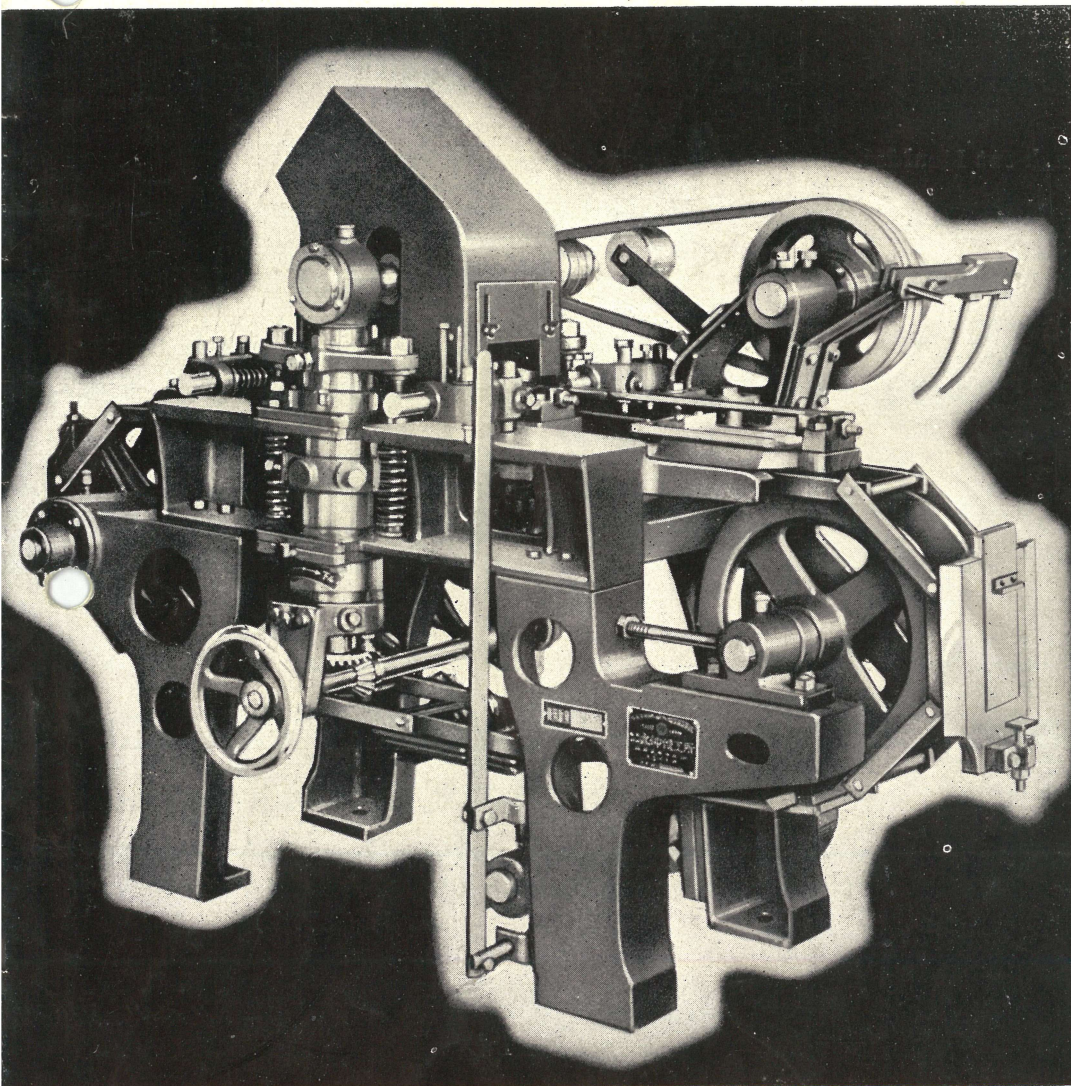
High
Speed

MARUNAKA IRON WORKS CO., LTD.

96, WAKAMATSU-CHO, SHIZUOKA. JAPAN.

MARU NAKA

Sandal Making Machines



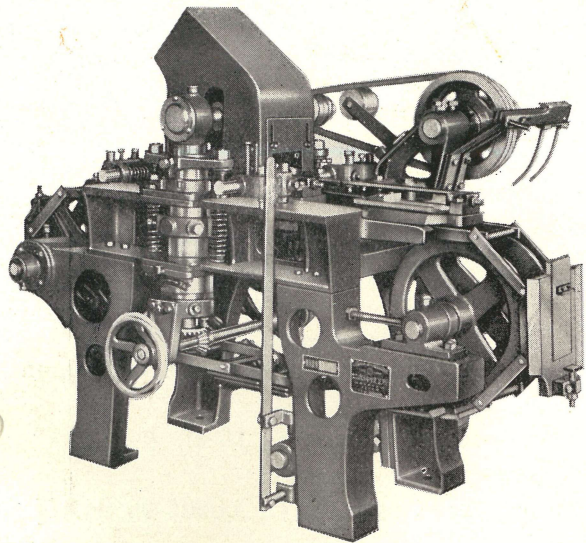
High
Efficiency

High
Production

High
Speed

MARUNAKA IRON WORKS CO., LTD.

96, WAKAMATSU-CHO, SHIZUOKA, JAPAN.



S 03 Automatic Surface Moulder.

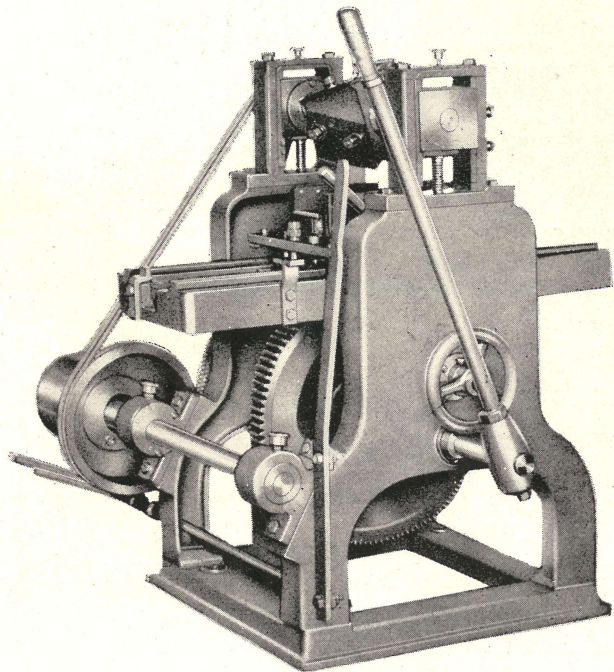
Specifications

Speeds of Cutter-Head (R. P. M.)	4,000
Counter Shaft for Cutter (R. P. M.)	1,300
Size of Pulley in the Above	5'' × 2 ⁵ / ₈ ''
Counter Shaft for Feeds (R. P. M.)	160 (8 pairs/min)
Size of Pulley in the Above	12'' × 2 ³ / ₄ ''
Power Required	2 H. P.
Size of Machine	34'' × 60'' × 40''
Capacity Per Day	3,000 Pairs
Attendance	1 Person
Net Weight	550 Kgs
Gross Weight	Kgs
Patent No.	386657 386658

S 20 Hands Surface Moulder.

Specifications

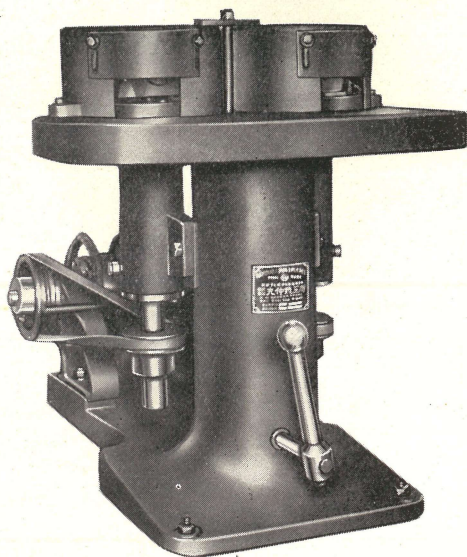
Speeds of Cutter-Head (R. P. M.)	3,600
Counter Shaft (R. P. M.)	1,200
Size of Pulley	7'' × 2 ⁵ / ₈ ''
Feeds	Hand
Power Required	1 H. P.
Size of Machine	36'' × 36'' × 40''
Capacity Per Day	1,500 Pairs
Attendance	1 Person
Net Weight	300 Kgs
Gross Weight	Kgs
Patent No.	373288



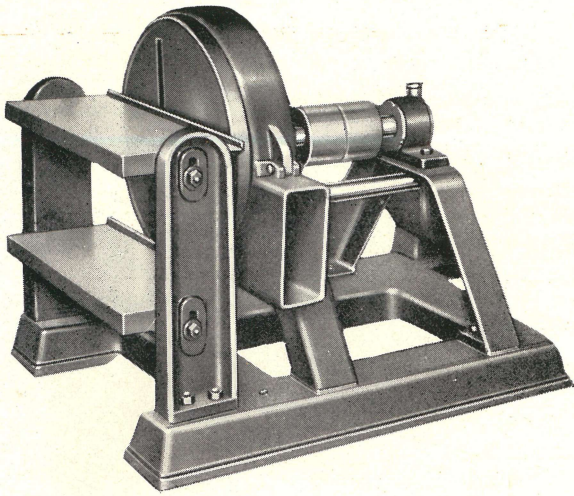
S 11 Double Spindle Sides Forming Machine.

Specifications

Spindle Speeds (R. P. M.)	3,400
Counter Shaft (R. P. M.)	1,900
Size of Pulley	4'' × 2 ¹ / ₂ ''
Power Required	1 H.P. ~ 2 H.P.
Size of Machine	25'' × 35'' × 28''
Capacity Per Day	1,500 Pairs
Attendance	1 Person
Net Weight	180 Kgs
Gross Weight	Kgs



Sipmle and Easy Controls



S 10~20 Disk Tread Finishing Machine.

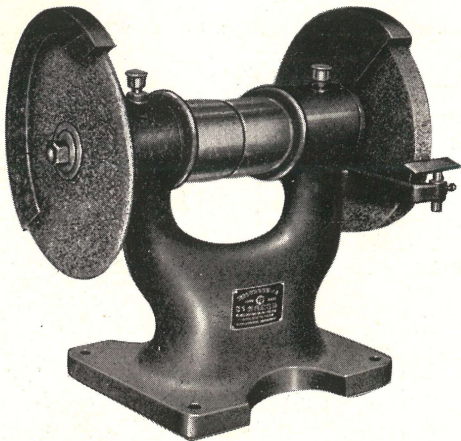
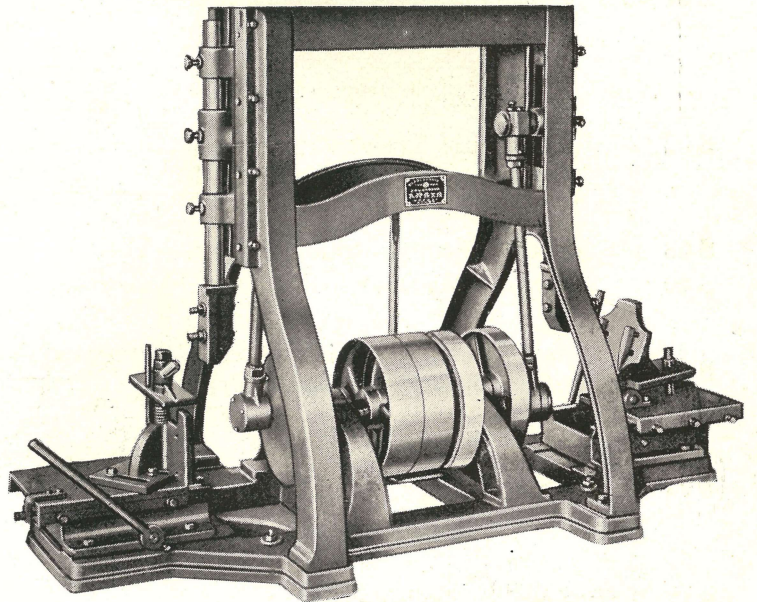
Specifications

Dia of Disk	20''
Spindle Speeds (R. P. M.)	1,700
Size of Pulley	4'' × 2 1/2''
Power Required	1 H. P.
Size of Machine	23'' × 26'' × 25''
Capacity Per Day	1,500 Pairs
Attendance	1 Person
Net Weight	200 Kgs
Gross Weight	Kgs

S 04 Twin Tread Chipping Slotter.

Specifications

Cutting Speeds (R. P. M.)	250
Counter Shaft (R. P. M.)	250
Size of Pulley	15'' × 3''
Power Required	1 1/2 H. P.
Size of Machine	64'' × 32'' × 45''
Attendance	2 Person
Capacity Per Day	1,500 Pairs
Net Weight	480 Kgs
Gross Weight	Kgs



S 16 Cutter Grinder.

Specifications

Size of Emery Wheel (Right Side)	10'' ~ 12'' × 1'' × 1''
" " (Left Side)	10'' × 1/4'' × 1''
Spindle Speeds (R. P. M.)	1,800
Size of Pulley	4'' × 2 1/2''
Power Required	1 H. P.
Size of Machine	25'' × 14'' × 20''
Net Weight	70 Kgs
Gross Weight	Kgs

Fine and Accurate Work

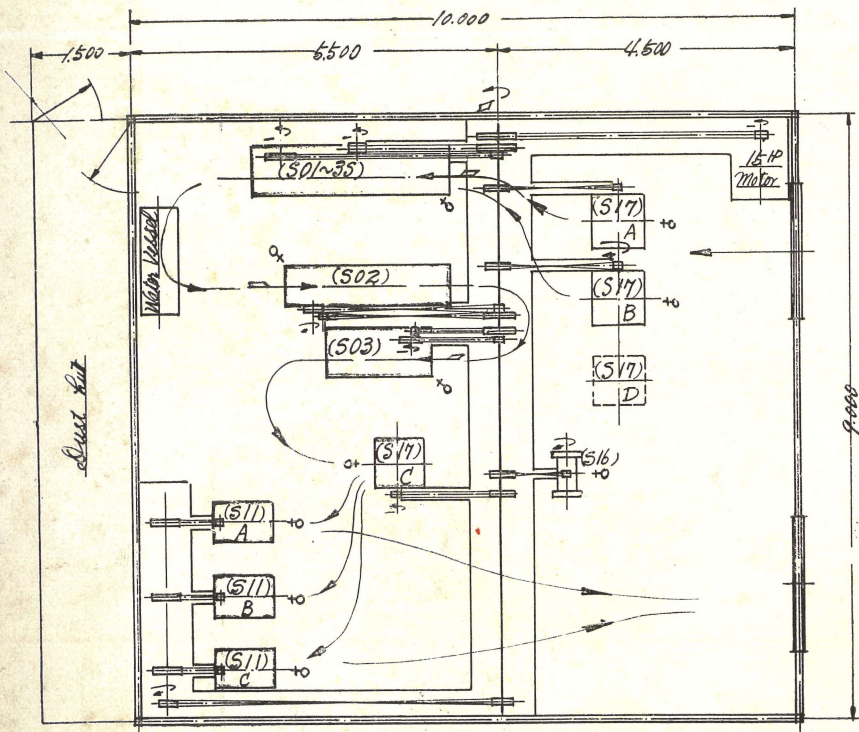
Making process

MACHINE NAME	ILLUSTRATION
S 17 Circular Saw Bench.	
S 01~3 S Automatic Tread Rough-cut Moulder.	
S 02 Automatic Tread Finishing Machine.	
S 03 Automatic (or Hands) Surface Moulder. S 20	
S 10~20 Disk Tread Finishing Machine. (Singel Side Type)	
S 04 Twin Tread Chipping Slotter.	
S 17 Circular Saw Bench.	
S 11 Double Spindle Sides Forming Machine.	
Completion	

Reduce Your Cost

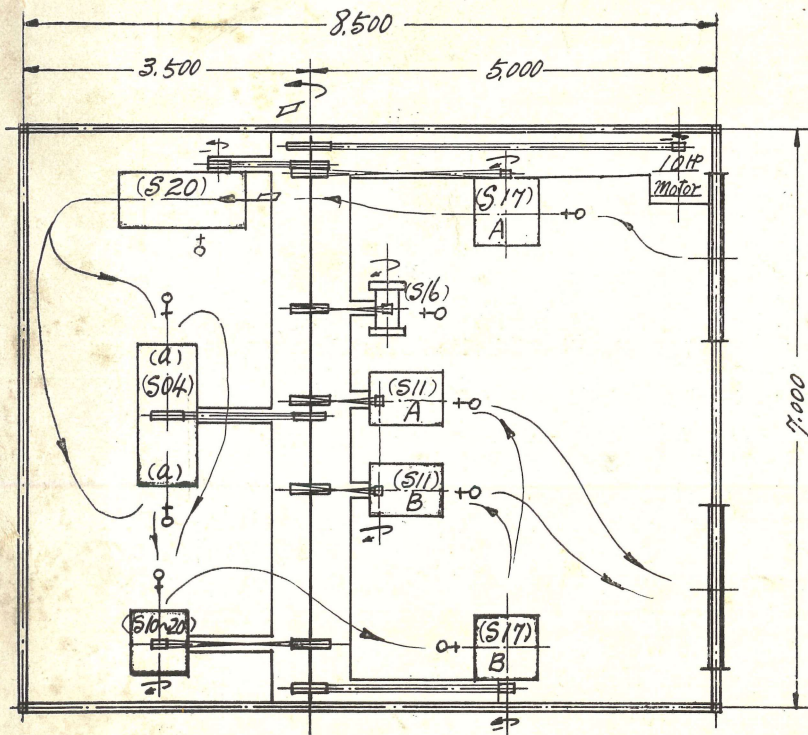
Lay-out of Factory

Fig. 1



Capacity: Over 2,000 Pairs
 3,000 Pairs
 Attendant: 9 men ~ 10 men
 Horse Power 15 H. P.
 Area About 90 Sq. M.

Fig. 2



Capacity: Over 1,000 Pairs
 Attendant: 8 men
 Horse Power 10 H. P.
 Area About 60 Sq. M.

